



## Quick Start Guide: OASIS ZIP/Tract Boundary Finder

Ver 1.4e

### Table of Contents

#### Common Uses

- 1) Find ZIP codes that are in or intersect with a county.
  - a. To see ZIP boundaries, turn layers on or off.
- 2) Find which county an address is in.
- 3) Find which census tracts intersect with a ZIP.

#### Features

- 4) Change the basemap.
- 5) Using the Group Filter to filter by census tract.
- 6) Using the map extent widgets.

## COMMON USES OF THE BOUNDARY FINDER

1. Find ZIP codes that are in or intersect with a county:

Begin by opening OASIS at <https://oasis.state.ga.us/>.

Click the Zip/Tract Boundary Finder link (Figure 1).

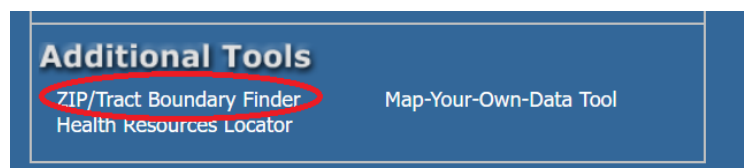


Figure 1

Enter a county into the search bar (Figure 2)

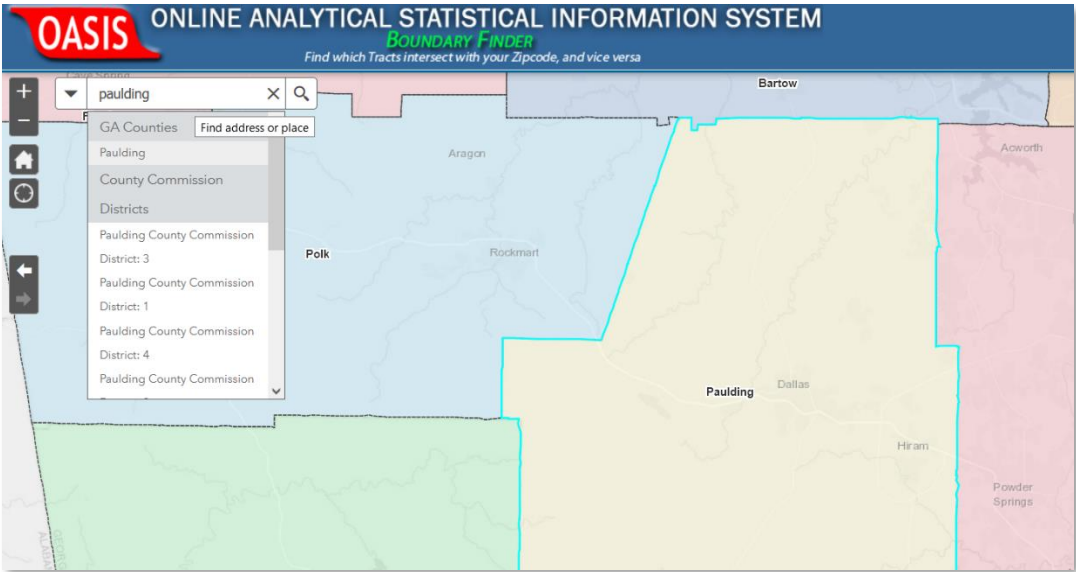


Figure 2

Click on the county, and you'll see a list of the ZIP codes that intersect with the county (Figure 3)

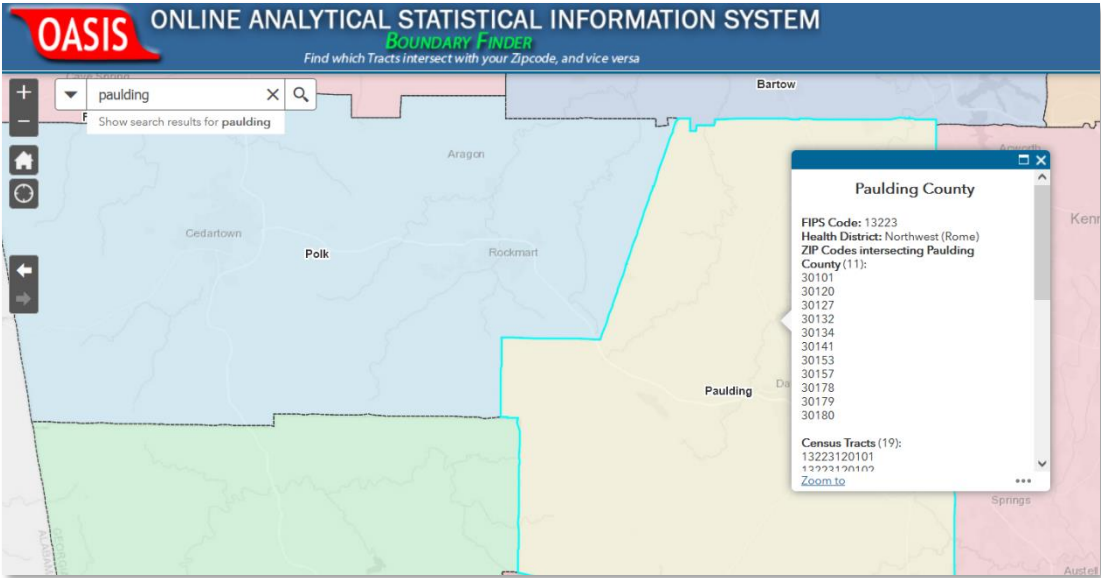


Figure 3

**1.a. To see the ZIP code boundaries, turn Layers on or off:** Click the layers widget, circled below, to turn on/off layers (tracts, ZIP codes, etc) by checking or unchecking them. Info for features that are turned off will not show up in the pop-up box (Figure 4)

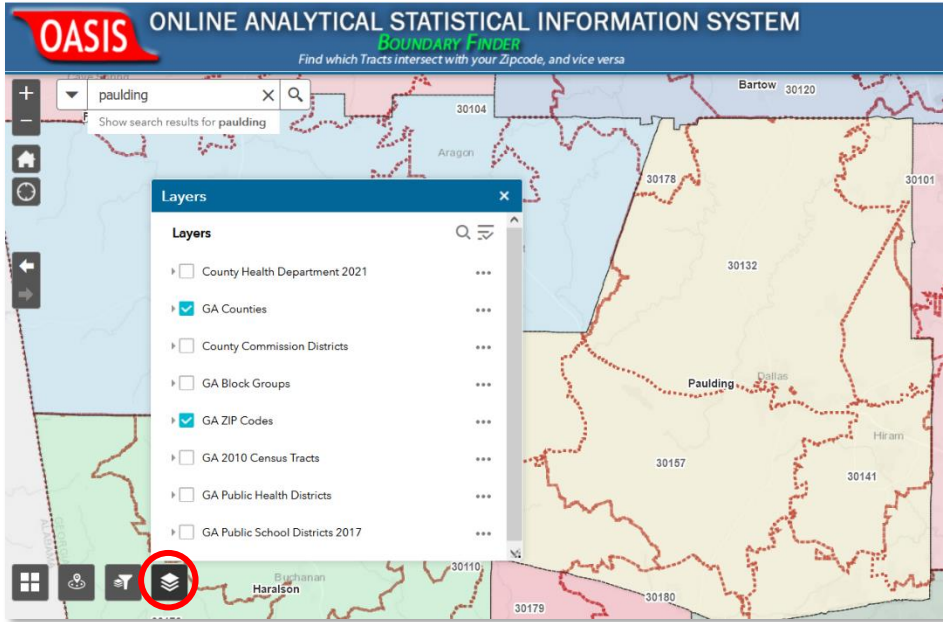


Figure 4

**2. Find which county an address is in:**

Enter the address in the search bar (Figure 5)

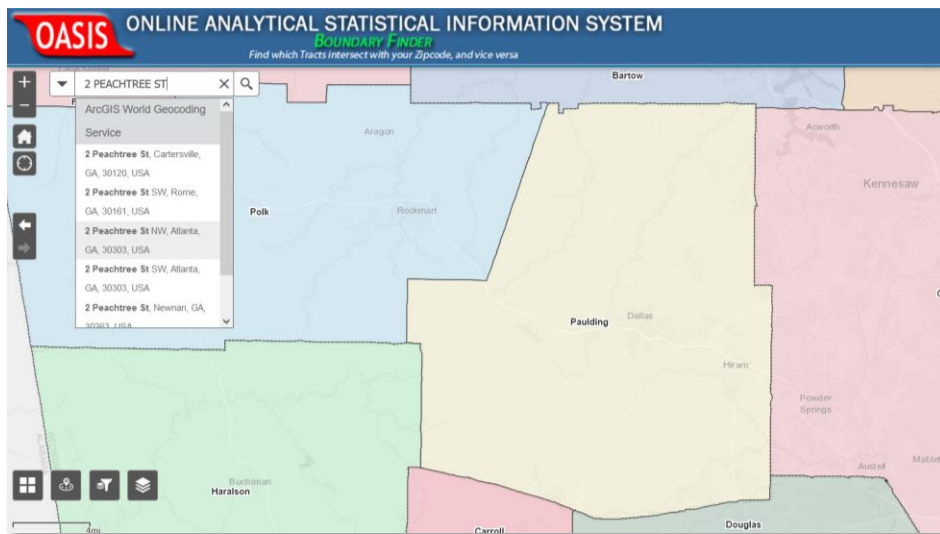
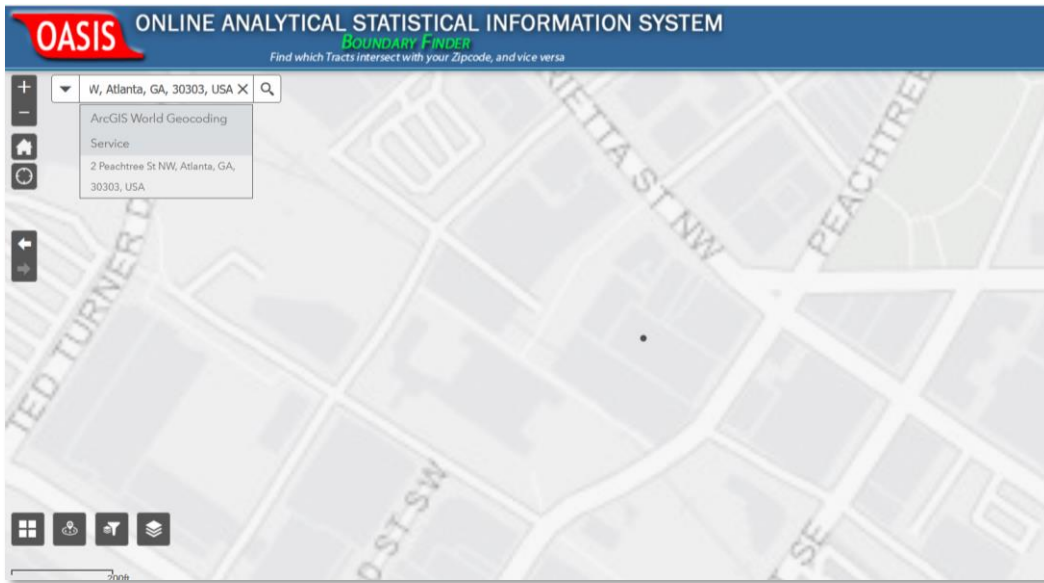


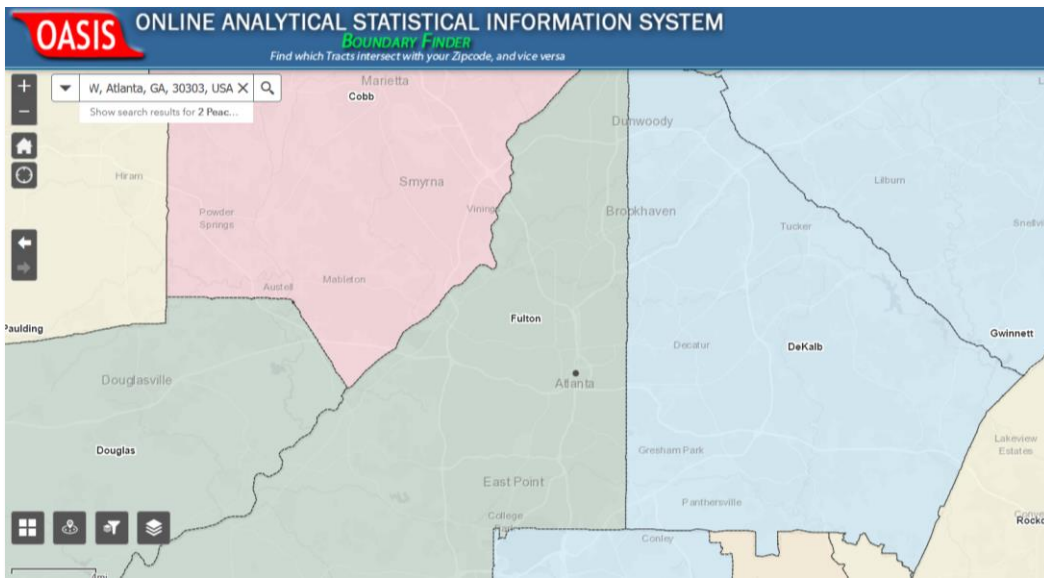
Figure 5

Select the address from the dropdown list or press enter to locate the address (Figure 6)



**Figure 6**

Zoom out to see that the address is in Fulton County (Figure 7)

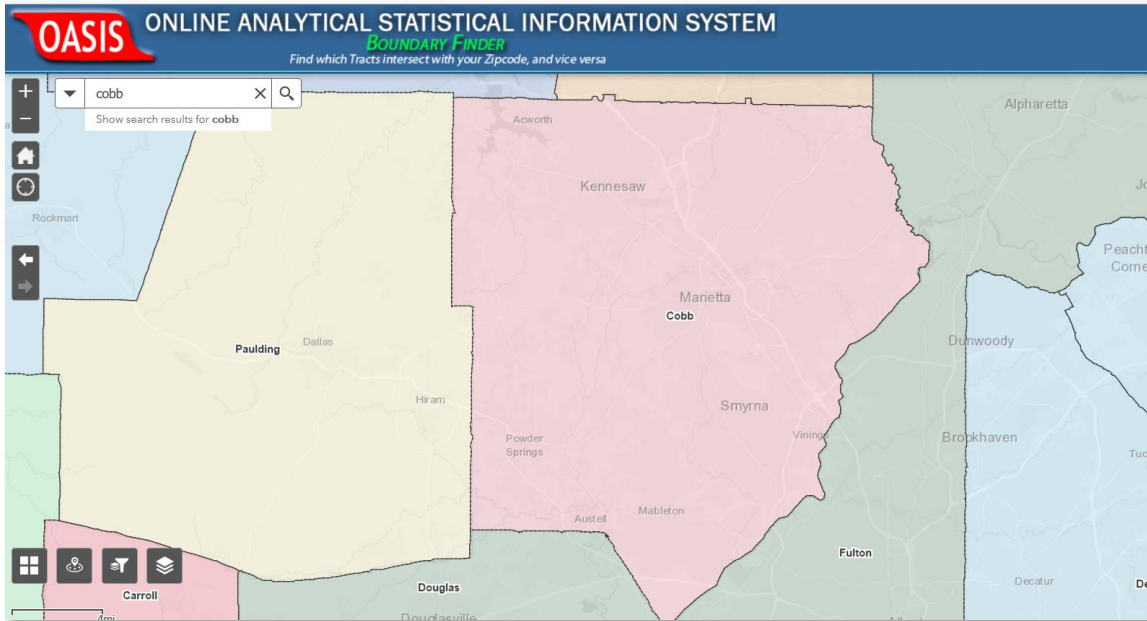


**Figure 7**

Turn on other layers to see what tract or ZIP the address is in.

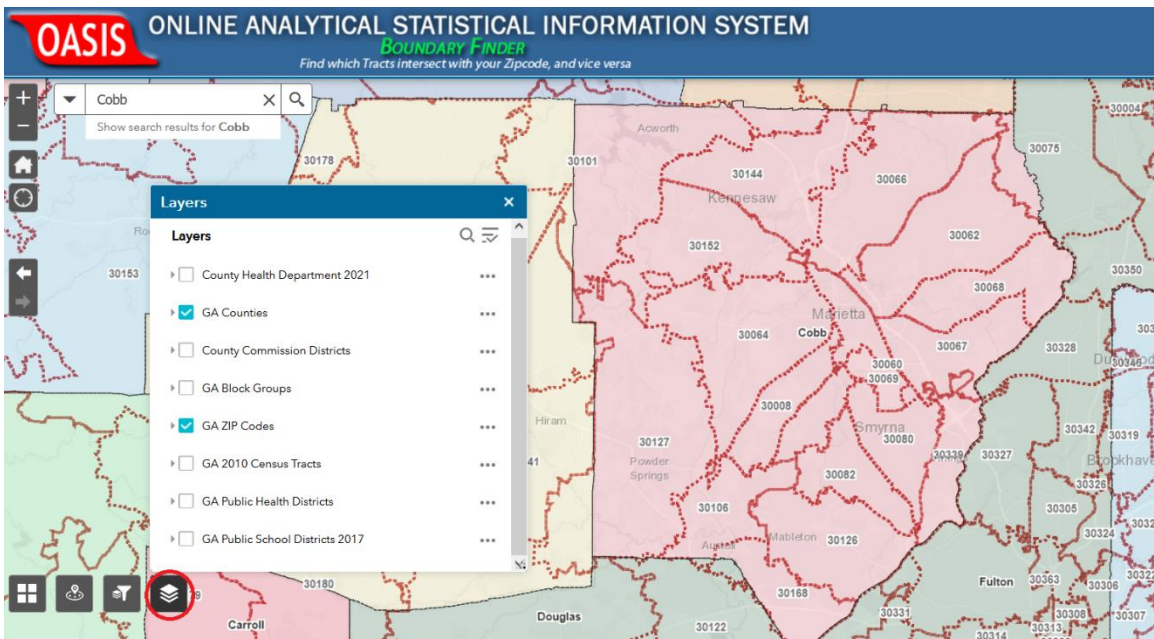
**3. Find which census tracts intersect with a ZIP:**

Choose Cobb County (Figure 8)



**Figure 8**

Add GA ZIP Codes layer, using the Layer feature (Figure 9)



**Figure 9**

Click on a zip code of interest (30144 shown below), and you'll see a list of the Census Tracts that intersect with the ZIP Code (Figure 10)

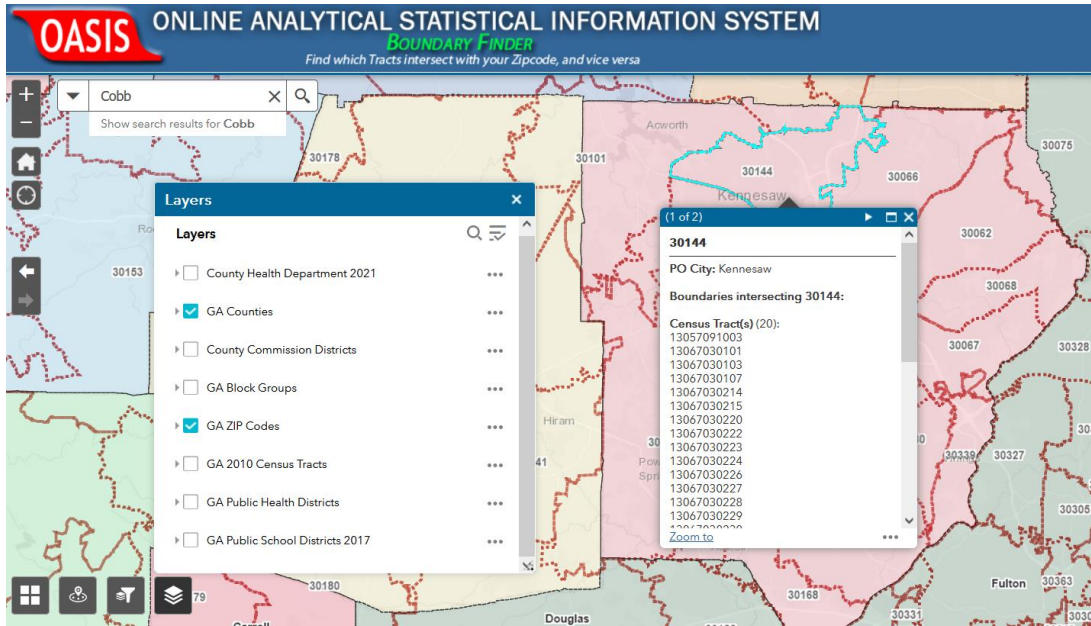


Figure 10

Add Census Tracts layer to the map (Figure 11).

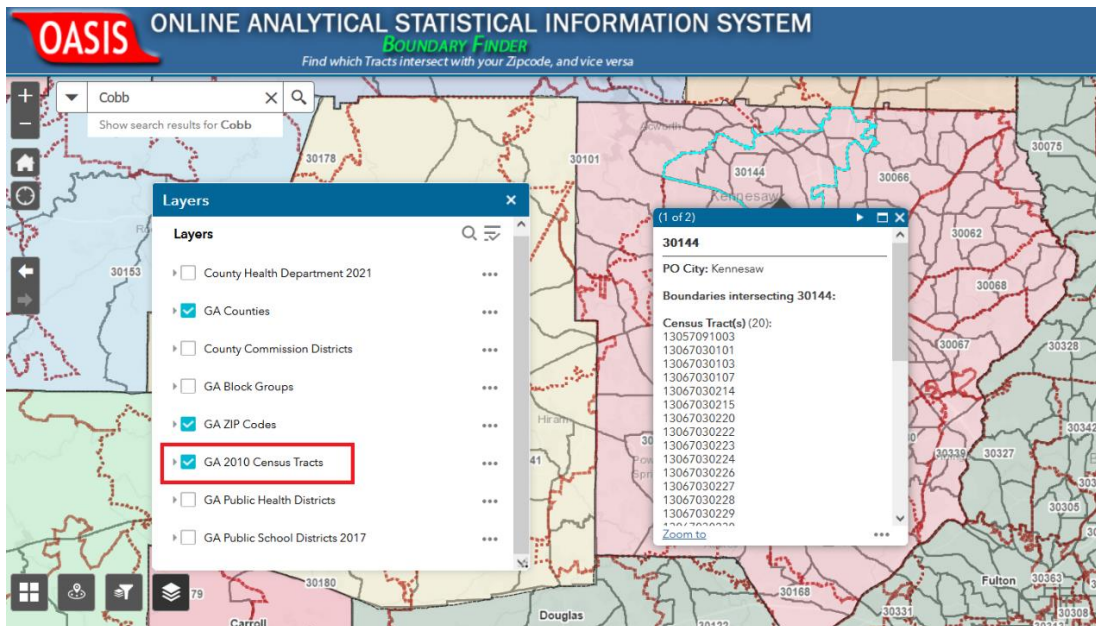


Figure 11

## FEATURES

### 4. Change the underlying basemap:

Click on the 4 white squares in the bottom left of the map for basemap options (Figure 12)

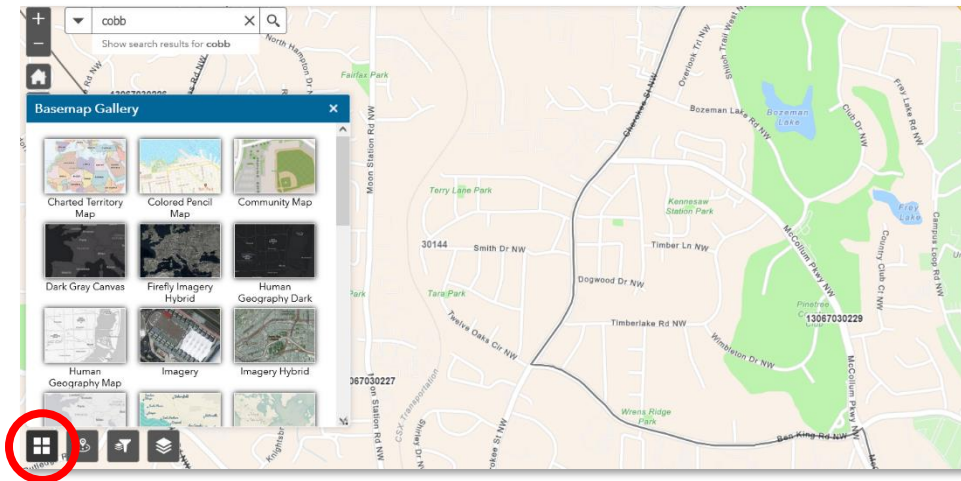


Figure 12

### 5. Using the Group Filter:

Click on the Group Filter widget highlighted below and select the filter/feature using the search bars. This will change the view so that only the filtered features are visible; this can be helpful when inspecting boundaries limited to one or more features in the census tract, public health district, or county layers (Figure 13)

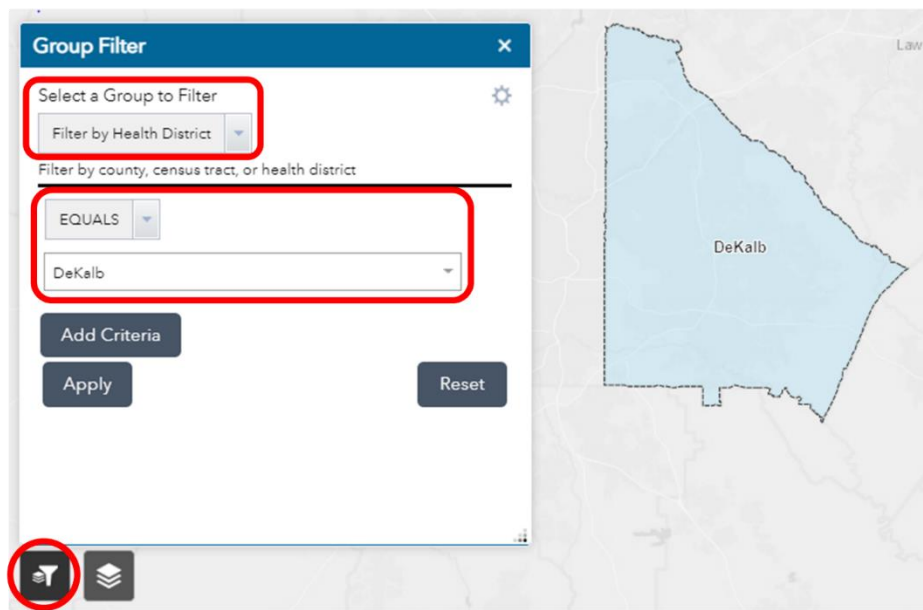
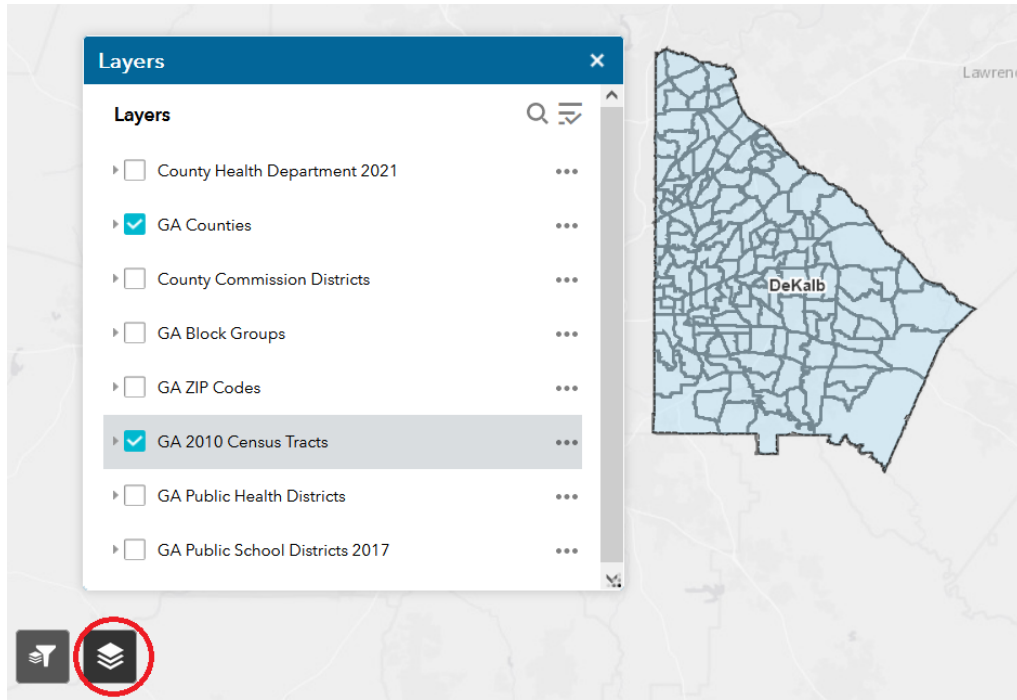


Figure 13

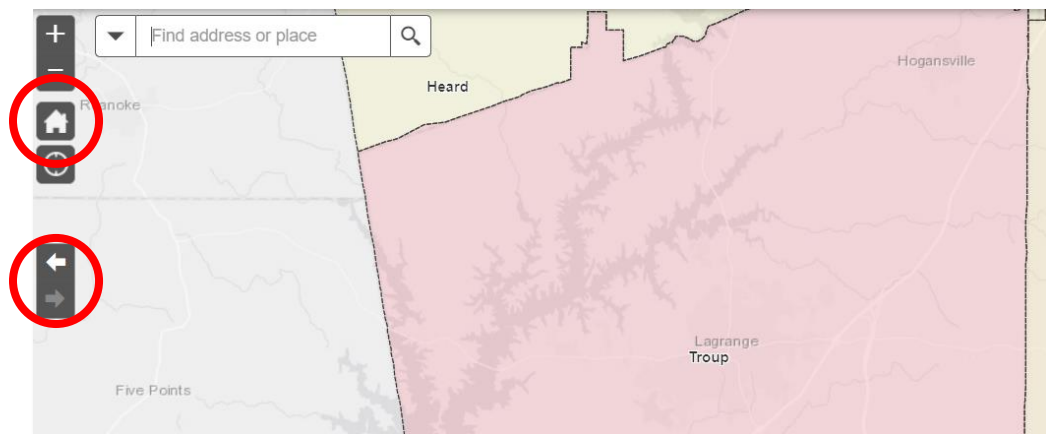
Click on the Layers widget and select GA 2010 Census Tracts. You will only see the census tracts in DeKalb County (Figure 14).



**Figure 14**

**6. Go back to previous map extent (view) and reset the map extent back to default:**

The arrows on the left side will move you between previous map views, while the home button (shaped like a house) will bring you to the default map extent showing the state of Georgia (Figure 15).



**Figure 15**

END.





V 1.4e, 5.14.22

Gordon Freymann/Jennifer Grimes/Shankar Pokharel  
Office of Health Indicators for Planning (OHIP)  
Division of Epidemiology  
Georgia Department of Public Health

